

VIPA SLIO

16x Digital Input and Output Modules
021-1BH00 and 022-1BH00

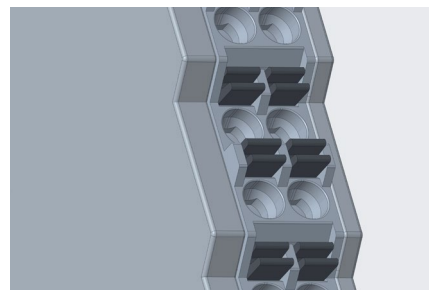
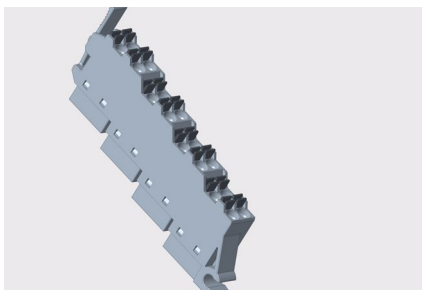
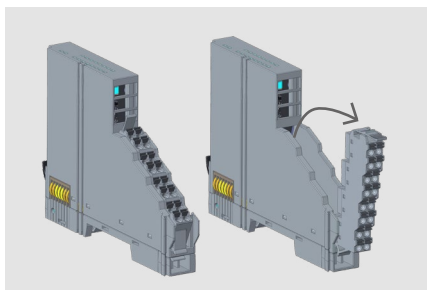


The latest member of the SLIO family provides significantly more space in the control cabinet. Thanks to the innovative design with removable front connector, wiring is particularly convenient.

THE ADVANTAGES

- 50% space saving in the system
- Control cabinets or decentralized I/O distributors can become significantly smaller
- Innovative design allows for easier wiring even in the event of subsequent changes

Space-saving, inexpensive and easy to wire



Modular concept

- The new modular design consists of the base module and a removable connector
- The base module can be easily pulled out and exchanged in the installed state
- They have the same compact dimensions of the previous SLIO modules (13x100x76 mm) which means that twice the amount of IOs can be accommodated in the same space

Removable connector

- The connector has a latch and can be removed from the base module via a swivel mechanism
- This allows pre-wiring of the connector and simplifies the wiring effort
- In the event of replacement, the wiring on the connector can remain in place and the connector can simply be plugged into the replacement module

Push-in technology

- The terminals of the connector are designed in push-in technology this allows for easy wiring
- Wiring possible with and without wire end ferrules



	021-1BH00	022-1BH00
Digital Inputs	16 x DC 24 V	-
Digital Outputs	-	16 x DC 24 V 0.5 A
Wiring	Without wire ferrules: 0.25 - 0.75 mm ² / AWG 24-18 With wire ferrules: 0.14 - 0.75 mm ² / AWG 25-18	

Yaskawa Europe GmbH

Drives Motion Controls Division
Ohmstr. 4
91074 Herzogenaurach
Germany

Tel.: +49 (0) 9132 744-0
Fax: +49 (0) 9132 744-1864
E-Mail: info@yaskawa.eu.com
www.yaskawa.eu.com

04/2021